



Children in Wales Annual Child & Family Poverty Survey Findings 2024: Practitioners

Canfyddiadau Arolwg Blynyddol Tlodi Plant a Theuluoedd 2024

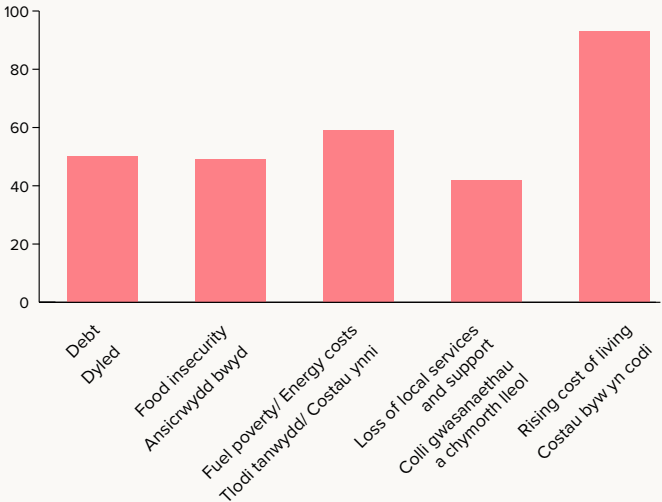
Practitioners and professionals said / Dywedodd yr ymarferwyr a'r gweithwyr proffesiynol:

*"People are losing hope and being pushed further and further into poverty."
"Mae pobl yn anobeithio ac yn cael eu gwthio ymhellach ac ymhellach i dlodi."*

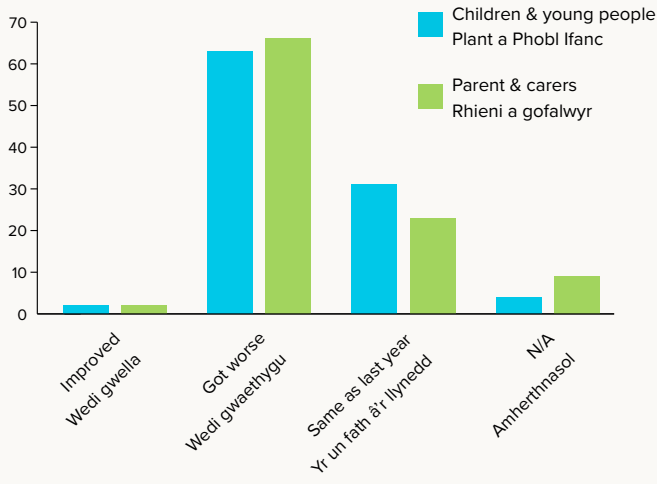
83%

said the poverty situation has got **worse** in the last 12 months
Dywedodd 83% fod y sefyllfa o ran tlodi wedi **gwaethygu** yn ystod y 12 mis diwethaf

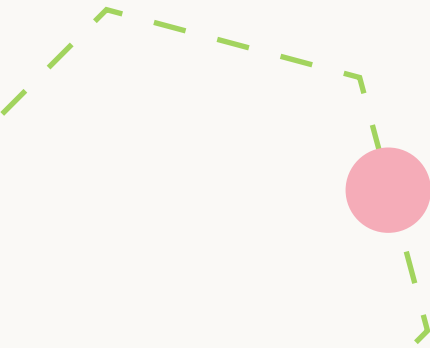
Top 5 poverty related issues affecting children and families / Y pum mater cysylltiedig â thlodi sydd ar y brig o ran effaith ar blant a theuluoedd



Changes in emotional health over the last 12 months / Newidiadau mewn iechyd emosiynol yn ystod y 12 mis diwethaf

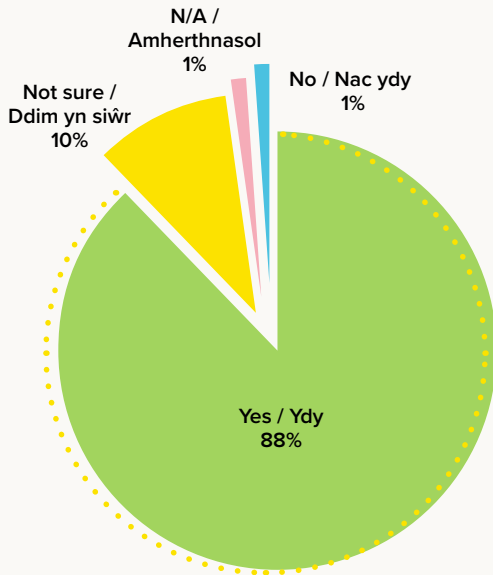


*"The persistent challenges associated with poverty... can contribute to feelings of hopelessness, helplessness and depression."
"Mae'r heriau di-baid sy'n gysylltiedig â thlodi ... yn gallu cyfrannu at deimladau o anobaith, diymadferthedd ac iselder."*





Does poverty affect children & young people's experience of school and learning? / Ydy tloidi'n effeithio ar brofiad plant a phobl ifanc o'r ysgol a dysgu?



"If they are hungry then they are not concentrating. If they cannot afford the correct uniform, they are not allowed in class so they are not learning properly."

"Os ydyn nhw'n llwglyd yna dydyn nhw ddim yn canolbwyntio. Os ydyn nhw'n methu fforddio'r wisg ysgol gywir, chân nhw ddim dod i'r dosbarth felly dydyn nhw ddim yn dysgu'n iawn."

Significant increase in demand for support and advice services **UP**

Mae'r galw am wasanaethau cyngor a chymorth **YN MYND I FYNY** yn sylweddol

but funding and service cuts means service capacity and provision **DOWN**

ond mae toriadau i gyllid a gwasanaethau yn golygu bod capasiti a darpariaeth gwasanaethau **YN MYND I LAWYR**

